

K-Styrene

(Calcium Polystyrene Sulfonate powder)

کے - سیسٹیرین
(کیلشیم پولی سیسٹیرین سلفونیت پاؤڈر)

Composition:

K-Styrene 15g sachet:

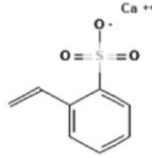
Each sachet contains:

Calcium Polystyrene Sulfonate.....15gm

(Innovator's Specs.)

Description:

K-Styrene Sachet contains calcium polystyrene sulfonate which is ion-exchange resin, it works by removing this extra potassium from your to bring your levels back to normal, it has the following structure formula:



Therapeutic Indications:

Calcium polystyrene sulfonate is an ion-exchange resin that is recommended for the treatment of hyperkalaemia associated with anuria or severe oliguria. It is also used to treat hyperkalaemia in patients requiring dialysis and in patients on regular haemodialysis or on prolonged peritoneal dialysis.

This is when there is too much potassium in your blood. It works by removing this extra potassium to bring your levels back to normal. It is often given to people who have kidney problems and people on dialysis.

Warning & Precautions:

- You are allergic (hypersensitive) to calcium polystyrene sulfonate or any of the other ingredients in this medicine (listed in section 6 Further Information).

Signs of an allergic reaction include: a rash, swallowing or breathing problems, swelling of your

- lips, face, throat or tongue
- You have been told that you have a low level of potassium in your blood
- You have been told you have problems that result in high levels of calcium in your body such as thyroid problems or some types of cancer
- Your gut is partially or completely blocked (obstructive bowel disease)
- You are taking a sweetener called sorbitol (a «sugar-free» sweetener used to sweeten food).

This is because taking sorbitol and K-Styrene at the same time can cause narrowing of the gut wall (gastrointestinal stenosis) and reduced blood flow to the gut wall (intestinal ischemia) causing severe damage to your gut (necrosis and perforation). You must not take any sorbitol whilst using K-Styrene.

Do not use this medicine if any of the above applies to you. If you are not sure, talk to your doctor or pharmacist before using K-Styrene.

- It is for your baby, and they were premature, had a low birth-weight or have reduced gut movement
- If you are not sure if any of the above apply to you, talk to your doctor or pharmacist before using K-Styrene.

Contraindication:

Please tell your doctor or pharmacist if you are taking or have recently taken any other medicines. This includes medicines you can buy without prescription, including herbal medicines. This is because K-Styrene can affect the way other medicines work. Also some medicines can affect the way K-Styrene works. In particular, check with your doctor if you are taking the following medicines:

- Medicines that contain salts such as magnesium, potassium or calcium. Ask your doctor if you are not sure
- Some medicines for constipation (laxatives) that contain magnesium
- Some medicines for indigestion (antacids) that contain magnesium or aluminium
- Digoxin or similar medicines from digitalis - for heart problems
- Levothyroxine or thyroxine - for an under-active thyroid
- Lithium - for mental illness

If you are not sure if any of the above applies to you, talk to your doctor or pharmacist before using K-Styrene.

Pregnancy and breast-feeding:

Talk to your doctor before using this medicine if:

- You are pregnant, might become pregnant, or think you may be pregnant
- You are breast-feeding or planning to breast-feed

Ask your doctor or pharmacist for advice before taking any medicine.

Dosage & Administration:

Your doctor will normally give you this medicine. If you are not sure why you are being given K-Styrene or have any questions about how much K-Styrene is being given to you, speak to your doctor or pharmacist.

- The dose will depend on the results of blood tests
- For children the dose is also worked out according to how much the child weighs
- The powder can be swallowed with a little water or be made into a paste with something sweet, such as jam or honey.
- It should not be mixed with fruit juice, this will stop the medicine working properly.
- It is important to sit up while taking the medicine so that you do not breathe in any powder into your lungs

Adults:

- The usual dose is 15g (one spoonful) three or four times a day
- Take at least 3 hours before or 3 hours after other oral medicines you may be taking. If you suffer from gastroparesis (a condition where your stomach can't Not. 61(3) Update to Medical Information telephone number empty itself in the normal way), leave at least 6 hours before or after taking other medicines

Children

If your child cannot take the medicine by mouth, it may be given into the back passage.

- The daily dose is 1g for each kilogram of bodyweight
- Once the medicine has started working the dose may be lowered to 0.5g daily for each kilogram of bodyweight

New-born babies

K-Styrene is only given into the back passage

- The daily dose is between 0.5g and 1g for each kilogram of bodyweight

It is important to give the right dose for children and babies. If too much is given, children and babies could get serious constipation.

Over Dosage:

It is unlikely that your doctor will give you too much medicine. Your doctor will be checking your progress, and checking the medicine that you are given. Ask them if you are not sure why you are getting a dose of medicine.

If you are given too much K-Styrene the following effects may happen:

- Feeling irritable or confused
- Being unable to concentrate
- Muscle weakness and poor reflexes leading to paralysis
- Breathing problems
- Faster or pounding heartbeat
- Muscle cramps

Missed Dose:

Your doctor will give instructions about when to have your medicine.

It is unlikely that a dose will be missed. If you think that you may have missed a dose, talk to your doctor.

If you stop being given K-Styrene

Keep having K-Styrene until your doctor tells you to stop. If you stop having Calcium Resonium, your illness may come back.

Blood Tests

Your doctor may do regular blood tests while you are taking this medicine. This is to check the levels of salts (potassium, sodium, calcium and magnesium) in your blood. If you have any further questions on the use of this product, ask your doctor or pharmacist.

Side Effects:

Tell a doctor straight away if you notice any of the following serious side effects:

- You have an allergic reaction. The signs may include: a rash, swallowing or breathing problems, swelling of your lips, face, throat or tongue
- Blood in your sick (vomit) or black tarry stools
- Feeling tired, confused, having muscle weakness, cramps or a change in heart rate. These may be due to having low levels of potassium in your body
- Feeling jittery, having fits or muscle cramps. This may be due to low levels of calcium or magnesium in your body
- Increased thirst or needing to go to the toilet more often
- High blood pressure, kidney problems, heart problems or swelling in your limbs. This may be due to high levels of sodium in your body
- Stomach upset, pain in your gut, narrowing or blockage of the gut
- Reduced blood flow to the gut wall causing severe abdominal (tummy) pain, or collapse
- Loss of appetite
- Feeling sick, being sick, constipation or diarrhoea
- Feeling short of breath or coughing. This could be the first sign of a serious chest infection. This can be caused by accidentally breathing in this medicine

Instructions:

Store below 30°C.

Protect from heat, light and moisture.

Keep all medicines out of the reach of children.

دوا کو ۳۰ ڈگری سینٹی گریڈ سے کم درجہ حرارت پر رکھیں۔
روشنی، نمی اور گرمی سے بچائیں۔

ڈاکٹر کی ہدایت کے مطابق استعمال کریں۔
تمام ادویات بچوں کی پہنچ سے دور رکھیں۔

صرف مستند ڈاکٹر کے نسخے کے مطابق ہی دوا فروخت کی جائے۔



Manufactured by:

GENOME PHARMACEUTICALS (PVT.) LTD.

Plot # 16/1, Phase IV, Industrial Estate Hattar-Pakistan.

Marketed by:



ALLIANZE MED PHARMA